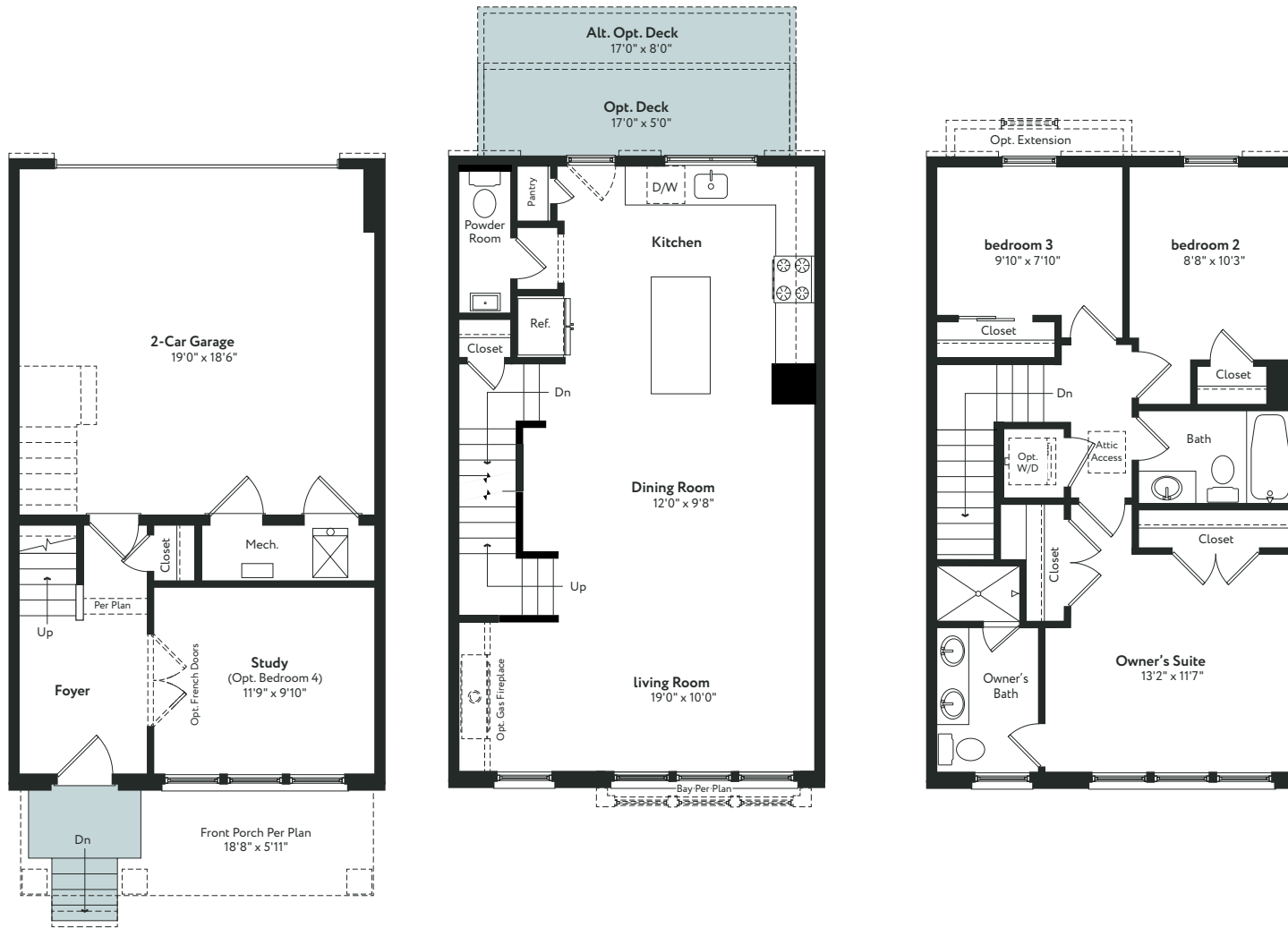


# The BUCHANAN

The Townhomes at  
**MICHIGAN PARK**

AN EYA NEIGHBORHOOD



**GARAGE ENTRY LEVEL**

**MAIN LEVEL**

**UPPER LEVEL**



Imagery is for illustrative purposes only. Features, finishes, terms and prices are subject to change without notice. The specifications, room dimensions, and features shown in the unit floor plan are approximate and are for illustrative purposes only. Square footage totals and room dimensions provided above may not be relied upon as definitive, are subject to modifications without notice, and may differ from the actual square footage and dimensions delivered. Actual layout, room dimensions, window sizes and locations, and steps to grade may vary and are subject to modifications without notice. References to "EYA" refer to EYA, LLC. EYA, LLC's development affiliates build homes in the Virginia, Maryland, and Washington, DC metropolitan area. Individual projects are developed and sold by EYA-affiliated entities, and all representations regarding the development, construction, or sale of any project or property refers to those affiliates. Buyers should carefully review their purchase and sales agreement before purchasing. EYA Marketing LLC markets, advertises, and sells each EYA affiliated property as agent for the seller. The Townhomes at Michigan Park (Michigan Park) is being developed by JO Associates LLC. No representations regarding the development, construction or sale of any portion of the Michigan Park community is made by EYA LLC or any EYA affiliate except JO Associates LLC. Sales by EYA Marketing LLC, agent for JO Associates LLC. Pursuant to the District of Columbia Inclusionary Zoning program, income restricted units are available at this development. Please contact the Department of Housing and Community Development at [www.dhcd.dc.gov](http://www.dhcd.dc.gov) regarding the availability of such units and requirements for registration in the Inclusionary Zoning program.

